

CERTIFIED LAND CORNER RECORDATION

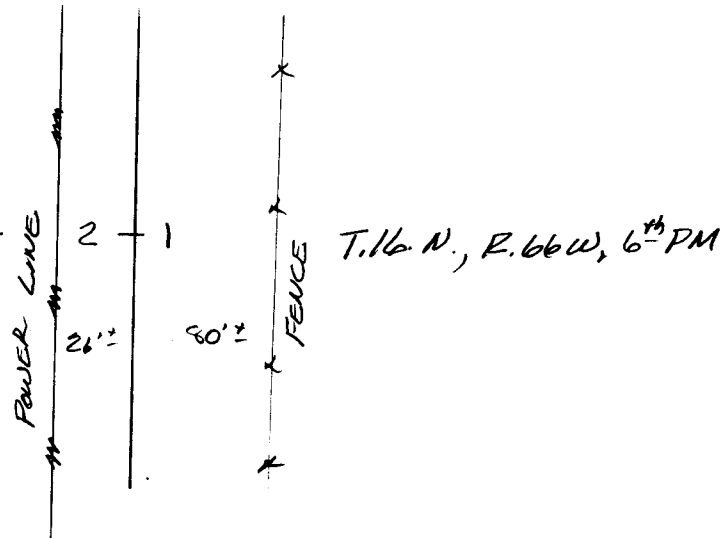
DESCRIPTION OF CORNER EVIDENCE FOUND, AND ORIGINAL RECORD (If known)

*FOUND MARKED STONE
BLUE COLOR*

DESCRIPTION OF MONUMENT AND ACCESSORIES ESTABLISHED
TO PERPETUATE THE ORIGINAL LOCATION OF THIS CORNER:

*MEASURED TO CORNER NORTH-2657.33'
MEASURED TO CORNER SOUTH-2651.52
USED CORNER TO ESTABLISH E-W DIVISION
OF SECTION 2*

SKETCH, WITH COURSE AND DISTANCE TO ADJACENT CORNER IF DETERMINED IN THIS SURVEY.
(May Sketch or Paste Reproduction on Reverse Side.)



I, DONALD M. HOPKINS certify that I have carefully performed or reviewed the work done on the diagrammed corner as reported on this recordation form and approve the same.

Donald M. Hopkins
Signature of Surveyor

550
Registration No.

STATE OF WYOMING,
Office of Clerk and Recorder,
County of _____

699253

This "corner record" was filed for record on the _____ day of MAY 20 1983, 19____, was noted on the cross-index plat and is assigned page No. _____, in book No. _____.

County Official			
Cross Index No. _____	T. _____	R. _____	Mer. _____
_____	T. _____	R. _____	Mer. _____
_____	T. _____	R. _____	Mer. _____
_____	T. _____	R. _____	Mer. _____
_____	T. _____	R. _____	Mer. _____
_____	T. _____	R. _____	Mer. _____
_____	T. _____	R. _____	Mer. _____